

> CCB

Ventilatori assiali intubati biforcati

Bifurcated duct axial fans



Versioni / Versions:



DESCRIZIONE GENERALE

La serie CCB è destinata ad impianti per l'estrazione di fumi caldi, atmosfere umide e sature di grasso o polvere, in cui il motore deve essere completamente isolato dal fluido convogliato.

Ad esempio sono utilizzati per l'estrazione d'aria da cucine, cabine di verniciatura, fornaci, fonderie...

L'installazione e la manutenzione sono facilitate grazie al montaggio "in linea" con il canale.

Adatti per funzionamento con aria fino alla temperatura di 200°C in servizio continuo.

COSTRUZIONE

- Cassa in acciaio inox AISI 304, con cassetta portamotore stagna, con flangia di fissaggio realizzata a norma UNI ISO 6580 – EUROVENT.
- Girante con pale a profilo alare in alluminio e mozzo in fusione di lega d'alluminio, ad alta efficienza, bilanciata secondo ISO 1940. Angolo di calettamento variabile da fermo.
- Esecuzione 4 (accoppiamento diretto con girante a sbalzo) e flusso aria da girante a motore.
- Motore asincrono trifase o monofase a norme internazionali IEC 60034, IEC 60072, EMC 2004/108/CE, LVD 2006/95/CE e marcato CE IP55, classe F. Servizio S1 (funzionamento continuo a carico costante).

ACCESSORI (pag. 23)

- Rete di protezione piana (CCr)
- Giunto antivibrante (CCga)
- Staffe di fissaggio (CCst)
- Boccaglio in aspirazione (CCbo)
- Silenziatori con e senza ogiva con tre diverse lunghezze (CCsa e CCsb)
- Controflange (CCf)
- Controflange con collare (CCfc)
- Supporti antivibranti

GENERAL DESCRIPTION

The bifurcated CCB fans are designed for conveying hot smoke, fumes and vapours, fluids with high humidity and/or saturated by grease, oil or particles, where the motor has to be totally out of the air flow. For example, they are used in professional kitchens, painting booths, furnaces, foundries, cooling/evaporative tower, etc. Distinguished by easy installation and maintenance. The casing is double ended with standard flanges, allowing its installation either along the ducting or at both ends. Suitable to convey air up to 200°C in continuous service.

CONSTRUCTION

- Stainless steel AISI 304 casing, with fixing flanges manufactured according to UNI ISO 6580-EUROVENT standard.
- High performance axial impeller with aerofoil profile blades and hub in die-cast aluminium, balanced according ISO 1940.
- Execution 4 (with impeller directly coupled to motor with feet) and airflow from impeller to motor.
- Asynchronous three-phase or single-phase motors according to international standards IEC 60034, IEC 60072, EMC 2004/108/CE, LVD 2006/95/CE, CE marked, IP 55, class F. Suitable to S1 service (continuous working at constant load).

ACCESSORIES (pag. 23)

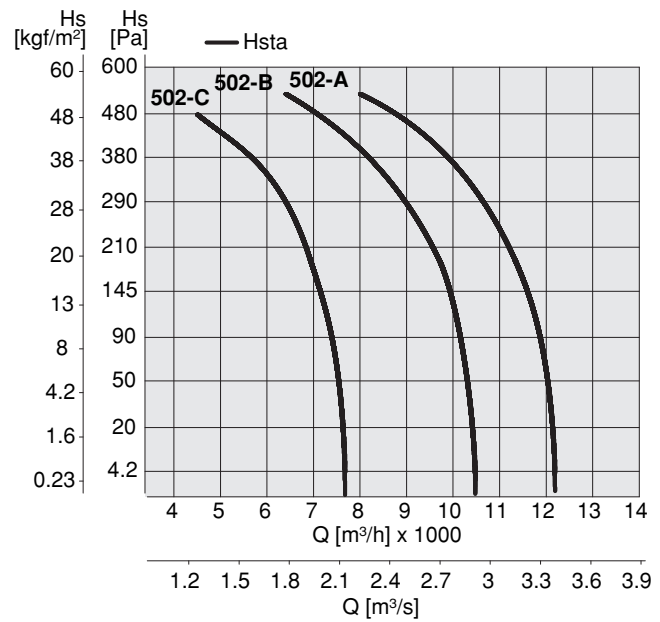
- Flat protection guard (CCr)
- Flexible connectors (CCga)
- Support feet (CCst)
- Inlet/outlet bell mouth (CCbo)
- Silencers, with and without pod, in three lengths (CCsa and CCsb)
- Counter flange (CCf)
- Counter flange with collar (CCfc)
- Anti-vibration mounts.

Frequenza 50Hz – Temperatura dell'aria 15°C – Pressione barometrica 760 mm Hg – Peso specifico dell'aria 1,22 Kg/m³
 Frequency 50Hz – Air temperature 15°C – Barometric pressure 760 mm Hg – Air specific weight 1,22 Kg/m³

L_p: livello di pressione sonora rilevato a 3 m - **L_p**: sound pressure level measured at 3 m

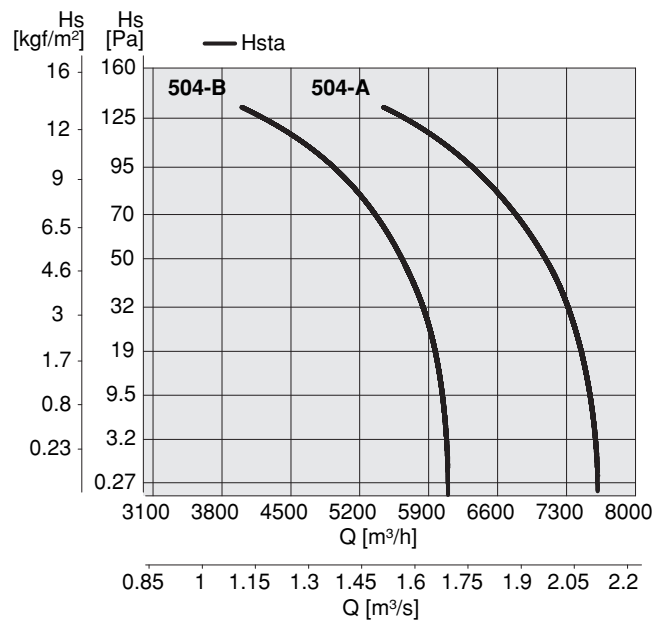
CCB 500 - 2 poli

Tipo Type	Modello Model	U	P	Pm (kW)	In (A)	IP/CL	Mot. (Gr)	L _p dB (A)
CCB	502-A	T	2	4,00	8,00	55/F	100	79
CCB	502-B	T	2	3,00	6,40	55/F	100	78
CCB	502-C	T	2	2,20	4,90	55/F	90	76



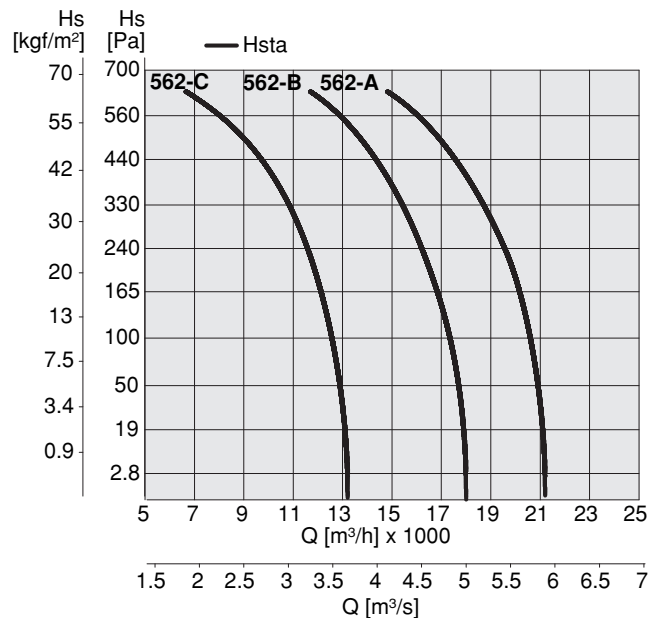
CCB 500 - 4 poli

Tipo Type	Modello Model	U	P	Pm (kW)	In (A)	IP/CL	Mot. (Gr)	L _p dB (A)
CCB	504-A	T	4	0,75	2,20	55/F	80	64
CCB	504-B	T	4	0,55	1,60	55/F	80	62



CCB 560 - 2 poli

Tipo Type	Modello Model	U	P	Pm (kW)	In (A)	IP/CL	Mot. (Gr)	L _p dB (A)
CCB	562-A	T	2	9,20	18,70	55/F	132	83
CCB	562-B	T	2	7,50	14,10	55/F	132	81
CCB	562-C	T	2	4,00	8,50	55/F	112	78

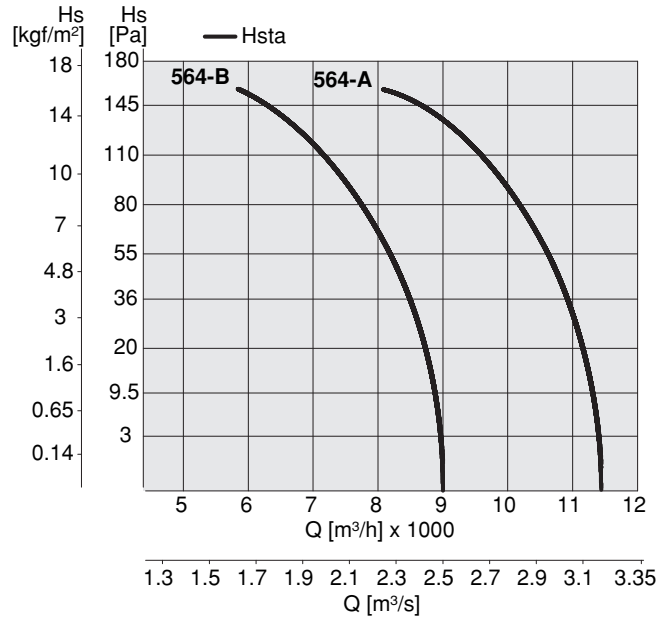


Frequenza 50Hz – Temperatura dell'aria 15°C – Pressione barometrica 760 mm Hg – Peso specifico dell'aria 1,22 Kg/m³
 Frequency 50Hz – Air temperature 15°C – Barometric pressure 760 mm Hg – Air specific weight 1,22 Kg/m³

Lp: livello di pressione sonora rilevato a 3 m - **Lp:** sound pressure level measured at 3 m

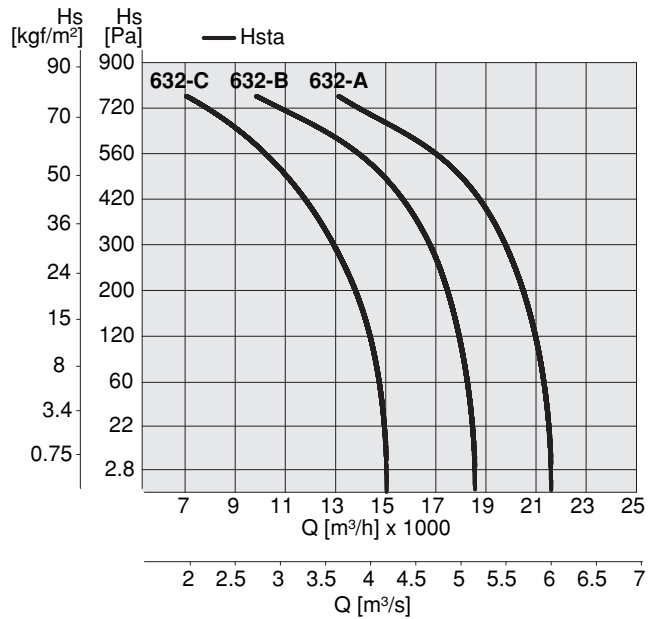
CCB 560 - 4 poli

Tipo Type	Modello Model	U	P	Pm (kW)	In (A)	IP/CL	Mot. (Gr)	Lp dB (A)
CCB	564-A	T	4	1,50	3,60	55/F	90	67
CCB	564-B	T	4	1,10	2,70	55/F	90	64



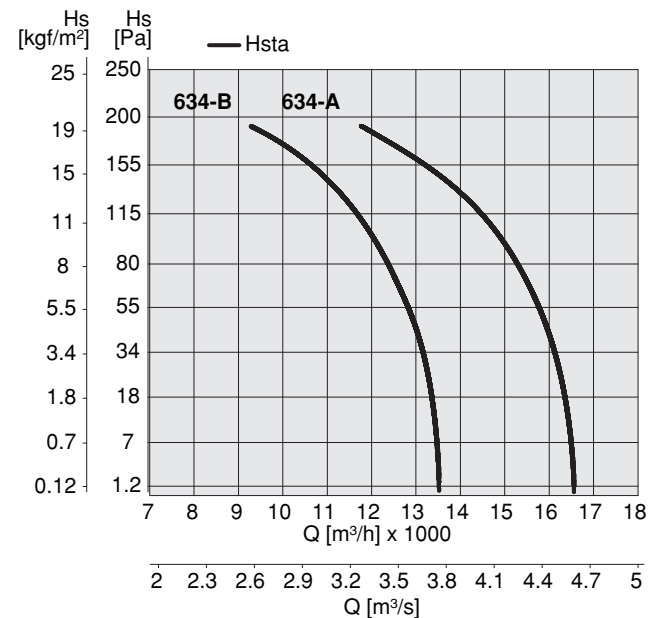
CCB 630 - 2 poli

Tipo Type	Modello Model	U	P	Pm (kW)	In (A)	IP/CL	Mot. (Gr)	Lp dB (A)
CCB	632-A	T	2	9,20	18,70	55/F	132	85
CCB	632-B	T	2	7,50	14,10	55/F	132	84
CCB	632-C	T	2	5,50	10,60	55/F	132	83



CCB 630 - 4 poli

Tipo Type	Modello Model	U	P	Pm (kW)	In (A)	IP/CL	Mot. (Gr)	Lp dB (A)
CCB	634-A	T	4	3,00	6,80	55/F	100	73
CCB	634-B	T	4	2,20	5,40	55/F	100	71

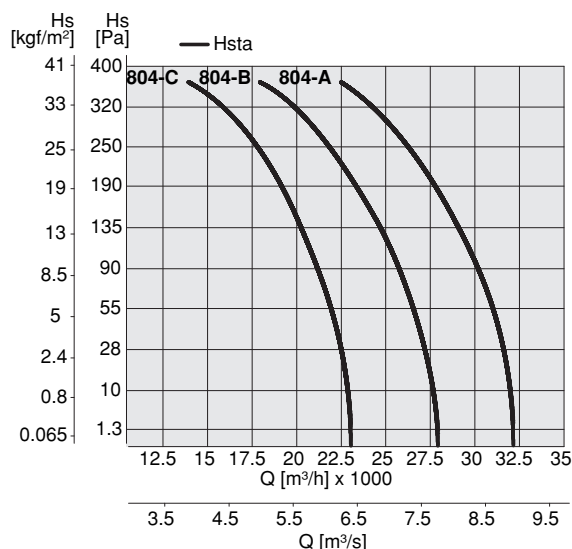


Frequenza 50Hz – Temperatura dell'aria 15°C – Pressione barometrica 760 mm Hg – Peso specifico dell'aria 1,22 Kg/m³
 Frequency 50Hz – Air temperature 15°C – Barometric pressure 760 mm Hg – Air specific weight 1,22 Kg/m³

Lp: livello di pressione sonora rilevato a 3 m - **Lp**: sound pressure level measured at 3 m

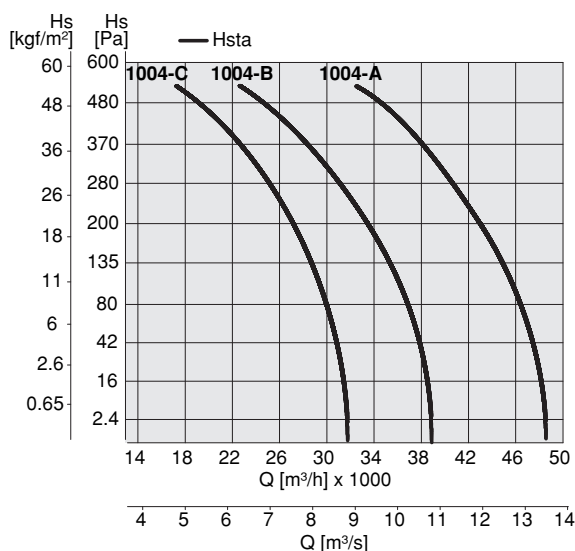
CCB 800 - 4 poli

Tipo Type	Modello Model	U	P	Pm (kW)	In (A)	IP/CL	Mot. (Gr)	Lp dB (A)
CCB	804-A	T	4	9,20	18,50	55/F	132	80
CCB	804-B	T	4	7,50	14,70	55/F	132	79
CCB	804-C	T	4	5,50	11,30	55/F	132	78

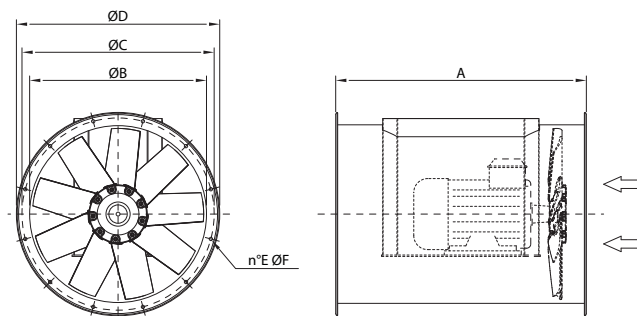


CCB 1000 - 4 poli

Tipo Type	Modello Model	U	P	Pm (kW)	In (A)	IP/CL	Mot. (Gr)	Lp dB (A)
CCB	1004-A	T	4	15,00	29,00	55/F	160	85
CCB	1004-B	T	4	11,00	22,00	55/F	160	84
CCB	1004-C	T	4	9,20	18,50	55/F	132	83



DIMENSIONI *Dimensions*



TIPO TYPE	Mot. (Gr.)	A	B	C	D	E	F	PESO (kg)
CCB 500	80/100	650	505	560	598	12	12	65
CCB 560	90	650	565	620	658	12	12	70
	132	800						130
CCB 630	100	650	635	590	730	12	12	75
	132	800						140
CCB 800	132	800	808	860	910	16	12	190
CCB 1000	132/160	1000	1010	1070	1130	16	16	300

Dimensioni in mm / Dimensions in mm