

FC 2V-HT & FCV 2V-HT

Dvobrzinski centrifugalni krovni ekstraktori Double speed centrifugal roof extractors

OSNOVNI PODACI :

Seriya FC-HT je rešenje za odvođenje dima velike temperature. Zato je izvanredan za izvlačenje u slučaju požara. U nekim evropskim zemljama je već uključen u propise o sistemima sigurnosti u slučaju požara, a u bliskoj budućnosti biće zakonom propisan unutar evropske unije. Razni testovi i svedočenja vatrogasaca su dokazala da je u slučaju požara iz prostorija korisno izvlačiti dim.

Prednosti izvlačenja u slučaju požara:

1.) U slučaju zatvorenih prostorija, moguće je lako dostići temperaturu od 1000°C, prouzrokujući sagorevanje bilo kog materijala samo radi zračenja vreline, stanje koje će učiniti beskorisnim bilo koju eksternu uništavajuću operaciju. Održavati temperaturu relativno niskom (300°C-400°C), izbacivanjem vrelotopog vazduha radi izbegavanja lomljenja-urušavanja nosećih konstrukcija objekata u datoj okolini; povećanjem vrednosti kiseonika dolazi do boljeg sagorevanja, prema tome kod većine materijala i do smanjenja stvaranja toksičnog dima.

2.) Nasilno izvlačenje stvara vakuum, tako sprečavajući širenje dima u druge prostorije.

Bolji uslovi vida omogućuju lakše spasavanje/bekstvo lica koja su ostala u zgradi, i pomoć u radu vatrogasaca.

3.) Pogodne vrednosti snage ventilatora, omogućuju izvlačenje na više mesta preko kanalnog ventilacionog sistema (seriya FC-HT se lako ugrađuje u sistem).

4.) Intenzivno izvlačenje omogućuje povlačenje hladnog dimnog gasa koji je izuzetno opasan za čoveka.

5.) Seriya FC-HT zahvaljujući radu u dve različite brzine, može se koristiti za tihu ventilaciju vazduha uz normalne dnevne aktivnosti, kao i u slučaju opasnosti za izvlačenje uz veliku snagu. Naravno, treba misliti i o odgovarajućim senzorima i uređajima sigurnosne tehnike.

Sposobnost rada na temperaturi od 200°C neprekidnog rada i 400°C na 2 sata, sertifikovane od strane kvalifikovanih autonomnih vlasti.

KONSTRUKCIJA :

- Ram je izrađen od galvanizovane čelične ploče.
- Zaštitna rešetka od čelične šipke zaštićena od atmosferskih agenasa.
- Sa visokim stepenom efikasnosti i tihim radom, radno kolo sa unazad zakrivljenim lopaticama izrađeno je od galvanizovane čelične ploče.
- Gornji poklopac je od technopolymera, sa odgovarajućim otvorima za pogodno hlađenje motora.
- Transporter u technopolymer-u (FCV).
- Trofazni asinhroni motor odgovara propisima IEC34-IEC72 i 89/392 EEC-89/336EEC-73/23EEC. Ima oznaku kvaliteta CE. Podloga za montiranje je tipa B3/5, IP55, klase F.
- Dvobrzinski rad pomoću prekidača zvezda/delta.

DODATNI DELOVI:

- Montiranje na suprotnu stranu (CB).
- Rešetka na unutrašnjem otvoru (RA).
- Servisni prekidač.

GENERAL DESCRIPTION

FC-HT series is the solution to the problems related to the evacuation of high temperature smoke; ideal therefore for emergency exhaust in case of fire. This feature is already mandatory in fire safety systems of several European and extra-European countries and in the near future it will become an official standard in the European Community.

It is already proved by various studies and tests that in case of fire it is worth to exhaust from the involved premises.

Such advantages can be summarised in a few points:

1) In case of closed premises, it is possible to easily exceed 1000°C, causing the combustion of any material just for heat radiation, condition that would make useless any external extinguish operation. To keep the temperature relatively low (300°C-400°C) by extracting hot air means to avoid the collapse of the supporting static structures of the involved area; in addition, the higher oxygen rate will cause a better combustion and thus, in most of materials, a lower production of toxic smoke.

2) The forced exhausting allows the placing in depression of the room, thus preventing the diffusion of smoke into other rooms, creating better conditions of escape for the occupants and making the identification of the hotbed easier for the fire men.

3) The forced exhausting allows the location of the outlets in places different from the controlled one, being the FC-HT series easy to duct.

4) The forced exhausting allows the extraction of the cold smoke, extremely dangerous for the occupants.

5) The forced exhausting through the FC-HT fans allows the ventilation of the premises also in normal activity situations (clean air) giving the possibility of using the double speed motor in low speed for normal ventilation (lower noise level) and high speed for emergency conditions. It is necessary to install an electric line of dedicated power that automatically operates in case of fire.

The capability of our roof fans series FC-HT to work at 200°C continuously or at 400°C for 2 hours is certified by a qualified independent authority.

CONSTRUCTION

- Base frame in galvanized steel sheet.
- Protection grid in drawn steel rod protected against atmospheric agents.
- High efficiency and low noise backward bladed impeller, in galvanized steel sheet.
- Protective techno-polymer covering, with suitable slots for proper motor cooling.
- Conveyor (FCV) in techno-polymer.
- Three-phase asynchronous motor according to international standards IEC34-IEC72 and 89/392 EEC-89/336 EEC-73/23 EEC and marked CE. IP55, class F. Double speed by delta/star switching.

ACCESSORIES

- Counter-base to be walled-up (CB).
- Inlet side grid (RA).
- Service switch.



FC 2V - HT



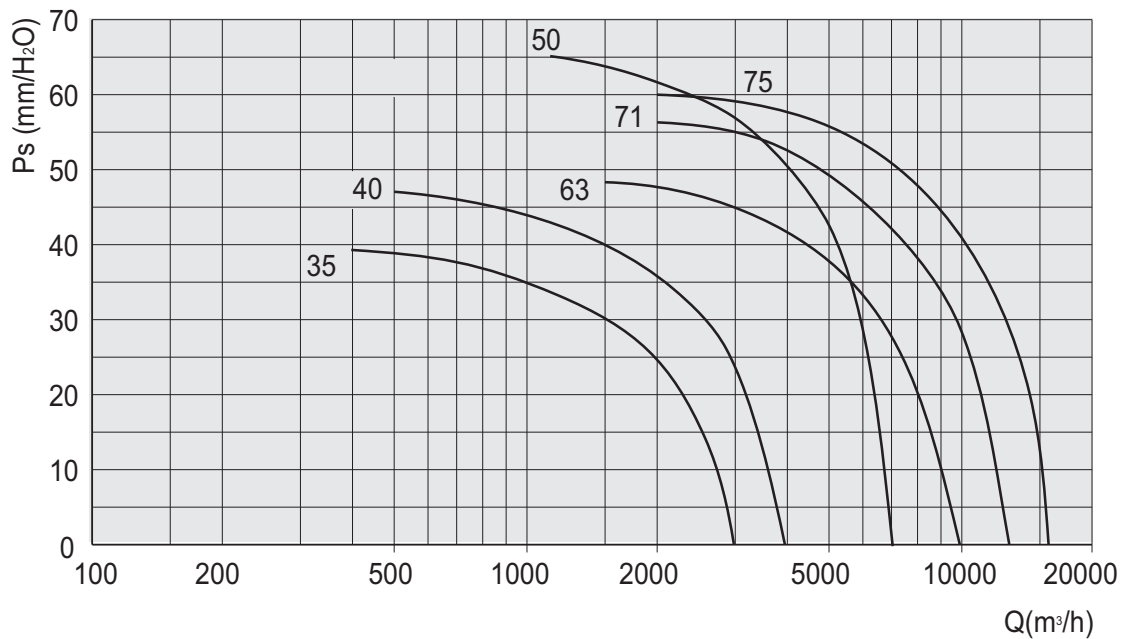
FCV 2V - HT

400°C/2h

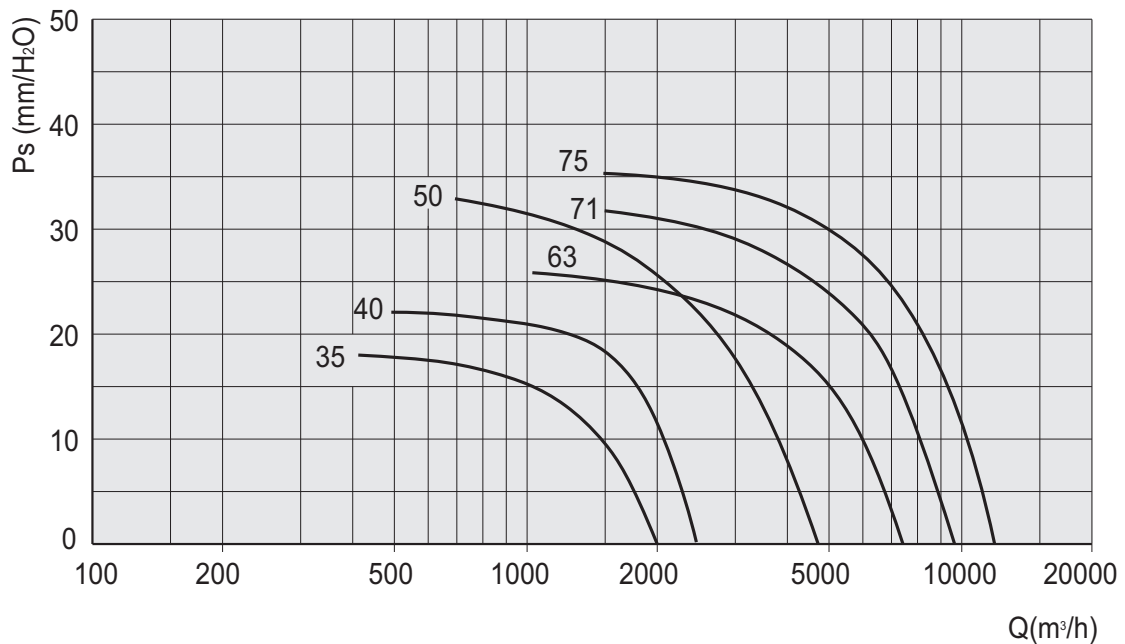
SEK. 11

Frekvencija 50 Hz - Temperatura vazduha 15°C - Barometarski pritisak 760 mm Hg - Specifična težina vazduha 1,22 Kg/m³
 Frequency 50Hz - Air temperature 15°C - Barometric pressure 760 mm Hg - Air specific weight 1,22 Kg/m³

Velika brzina / High speed (s)

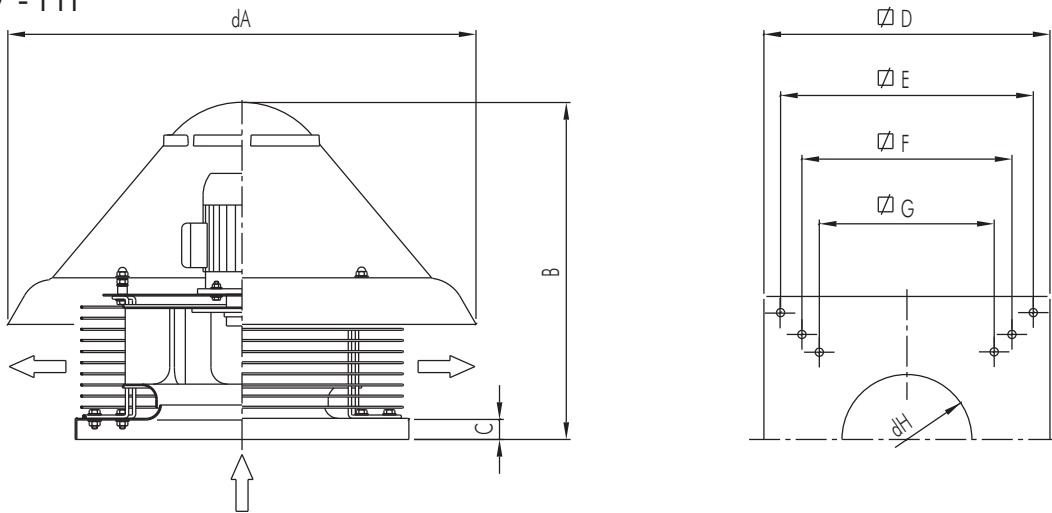


Mala brzina / Low speed (λ)



Tip Type	Model Model	U	rpm		Pm (kW)	In (A)		Mot. (Gr)	Lp dB(A)	
			s	λ		s	λ		s	λ
FC 2V-HT/FCV 2V-HT	35	T	1450	950	0,26	0,93	0,53	71	56	48
FC 2V-HT/FCV 2V-HT	40	T	1450	950	0,55	1,2	0,7	80	61	50
FC 2V-HT/FCV 2V-HT	50	T	1450	950	1,1	2,6	1,4	90S	67	56
FC 2V-HT/FCV 2V-HT	63	T	950	700	1,1	2	1,2	90L	61	54
FC 2V-HT/FCV 2V-HT	71	T	950	700	1,5	3,9	2,2	100L	65	57
FC 2V-HT/FCV 2V-HT	75	T	950	700	1,8	5	2,9	100L	67	58

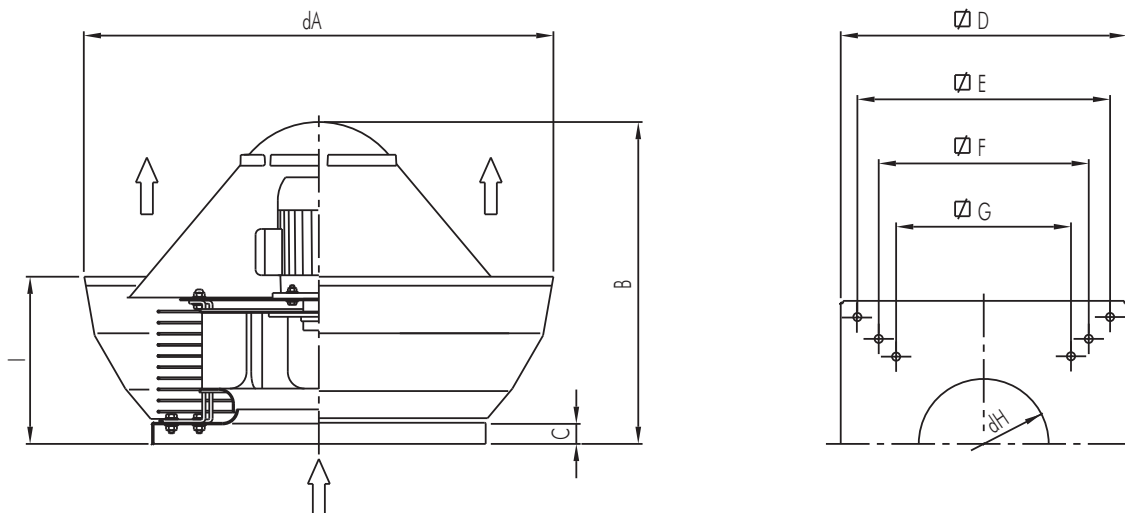
FC 2V - HT



Tip / Type	dA	B	C	D	E	F	G	dH	kg.
FC 2V-HT 35	750	580	38	500	450	/	380	270	27
FC 2V-HT 40	900	640	38	650	600	530	471	296	32
FC 2V-HT 50	1100	750	38	760	710	650	550	370	58
FC 2V-HT 63	1300	850	38	930	870	775	665	430	80
FC 2V-HT 71	1300	880	38	930	870	775	665	480	100
FC 2V-HT 75	1300	880	38	930	870	775	665	480	115

Dimenzije u mm / Dimensions in mm

FCV 2V - HT



SEK. 11

Tip/Type	dA	B	C	D	E	F	G	dH	I	kg.
FCV 2V-HT 35	800	580	38	500	450	/	380	270	340	28
FCV 2V-HT 40	980	640	38	650	600	530	471	296	400	33
FCV 2V-HT 50	1200	750	38	760	710	650	550	370	490	59
FCV 2V-HT 63	1400	850	38	930	870	775	665	430	540	82
FCV 2V-HT 71	1400	880	38	930	870	775	665	480	540	103
FCV 2V-HT 75	1400	880	38	930	870	775	665	480	540	118

Dimenzije u mm/Dimensions in mm